

**JUICEBOX™**

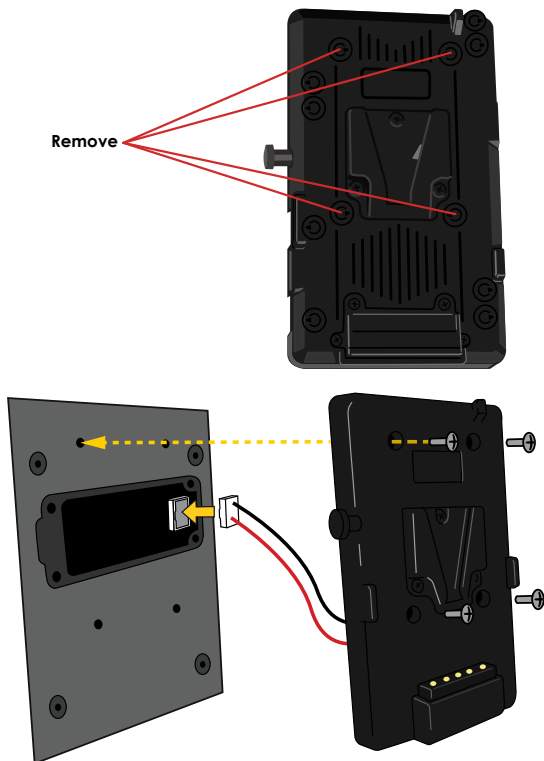
URSA POWER JBUP-01

Thanks for purchasing a Juicebox!  
To ensure best results, please  
read the following instructions  
before use.

## SETUP

Using a phillips screwdriver, remove the four screws from the access panel at the rear of the camera. Remove the access panel and set it aside.

Pry the four center-most caps from the v-mount plate. Set these aside, as well.



Plug the v-mount plate's power connector into the corresponding power port at the back of the camera. Align the four holes in the v-mount plate with the corresponding holes in the back of the camera. Using the four screws included with the v-mount plate, secure the v-mount plate to the back of the camera.

## USE

Charge the battery before first use. To charge, connect the smart charger to the battery's d-tap input. The smart charger's LED light will glow red while the battery is charging and will glow green when the battery is fully charged.

To check the charge level during use, press the button below the led display on the side of the battery. Connect the battery to the camera by sliding it firmly downward onto the v-mount plate until it clicks securely into place. Release the battery by pressing the button on the side of the plate and sliding the battery firmly upward.

## SUPPORT

If you have issues, questions or feedback, please contact us at [support@juicebox.direct](mailto:support@juicebox.direct). To see our full line of products, including Ursa-compatible v-mount batteries, visit our online store at [Juicebox.Direct](http://Juicebox.Direct).

Please take the time to review us online! As a small, independent company producing cost-effective film gear, your feedback is essential to our growth.

Thank you for your purchase!

JUICEBOX.DIRECT